



Address : No.30, 4th Rd. Linji Community Yingzhong Town
Zhongxiang 431900 CN.
Sales: sales@valueplanes.com
Tech: tech@valueplanes.com
Tel: 0086 18608628766



Cloud walker 65 Building instruction



CATALOG

INTRODUCTION	P1
PRODUCT LIST& KIT FEATURES	P2
BUILDING INSTRUCTION.....	P3-P15
1) FUSELAGE ASSEMBLY.....	P3
2) WING	P9
3) TAIL	P12
4) OTHERS.....	P15



INTRODUCTION

CLOUD WALKER 65 WAS DESIGNED BY VALUEPLANES IN 2019. THE DESIGN INSPIRATION COMES FROM OLD TOMER STYLE VINTAGE PLANES. IN ORDER TO MEET THE REQUIREMENTS FROM SPORT FLYERS WHO WANTED TO HAVE A GO AT VINTAGE FLYING AND THE BEGINNERS. THE DESIGN STAYS TRUE TO ITS ORIGINS WITH GENUINE REED TIPS ON THE WING AND TAIL.

CLOUD WALKER 65 KIT INCLUDES PRE CUT WING RIBS, REED WOOD STRIPS FOR THE WING AND TAIL TIPS, PLY FORMERS, Balsa STRIP, SHEET AND BLOCK PARTS, UNDERCARRIAGE WIRE AND WHEELS, GLAZING, HARDWOODS AND DOWEL, A HARDWARE PACK AND FULL SIZE PLANS. EVERYTHING NEEDED TO BUILD THE BASIC AIRFRAME OF THE MODEL. CUSTOMERS JUST NEED COVER, POWER SYSTEM, SERVOS, RX&TX. AND IT'S COMPATIBLE WITH EP & GP.

IT'S VERY GOOD CHOICE FOR LEISURELY FLYING IN THE FAST-PACE LIFE.



1

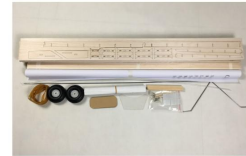


PRODUCT LIST & KIT FEATURES

PRODUCT LIST:

1* Un-assembled Cloud Walker 65 Kit:

Wood sheet pack*1
1:1 Plan*1
Batten sets
Operation instruction*1
Acrylic side window*2
PVC windshield *1
Connecting rods with tube *2
Fitting bag*1
Undercarriage wire*1
wheels*2



KIT FEATURES

- Complete frame KIT.
- The design is derived from the classics Old Timer vintage planes.
- Extremely lightweight, state-of-the-art almost-balsa construction.
- Everything needed to build the basic airframe of the model.
- Compatible with EP & GP.
- Extensive clear full size planes and instructions.
- Only adhesives and coverings are required to complete the airframe.

2



BUILDING INSTRUCTION

1 FUSELAGE ASSEMBLY

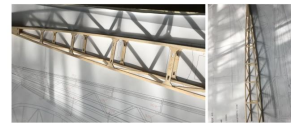
1) Use plastic film to isolate the drawing, 6X6 battens are used to build the frame, then mirror the other side.



2) Paste the bulkheads and keep it vertical.



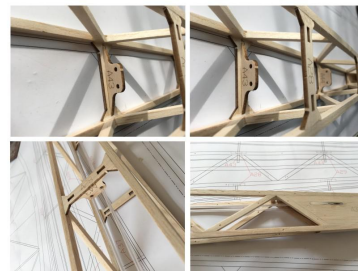
3



3) Fill the gap with balsa chips and polish it.



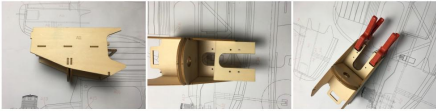
4) Paste the connecting rod fixers into the upper bulkheads and install the PVC tubes.



4



5) Glue the head laminate and engine stiffener.



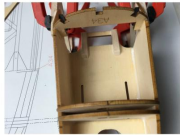
6) Drill the mounting hole in the laminate and install the T-nuts according to the type of engines used.



7) According to the position of the drawing, combine the nose laminate and fuselage frame together.



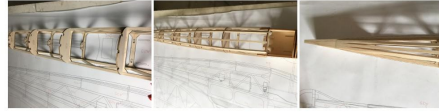
8) Glue balsa to the bottom of the throttle servo seat (EP version no need to be strengthened).



6



9) Paste the bottom partition on the fuselage, and install 6X6 balsa battens.



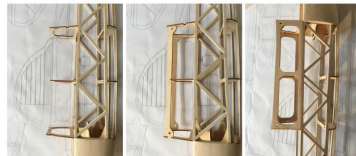
10) Glue 8MM balsa board to the bottom and sides of the head.



11) Use tools to trim and sandpaper the finish.



12) Glue wing bulkheads, wing strengthening, and wing platform balsa sheets.



6



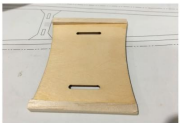
13) Glue the upper bulkheads on the fuselage and install the balsa battens.



14) Glue the balsa battens on the side of the fuselage and polish the tail.



15) The fuel tank mounting plate is pasted with 6X6 balsa battens and polished to be bevel. (not required for the EP version).



16) Glue balsa battens strengthening to servo mount.



7



17) Assemble servo mount and fuel tank mount to the fuselage.



18) According to the different choices, A7 for GP version, A1 for EP version, and paste 2 layers of 8MM balsa plate, and trim and smooth it.



19) According to the different power choices, choose different head components and installation methods to make the spinner. (GP version in pictures)



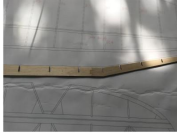
20) Making wing strut with 8mm balsa board.



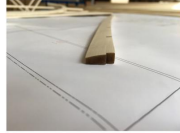
8

2 WINGS Assembly

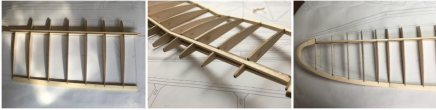
1) Assemble and glue the two wing ventral plates together.



2) Sand the trailing edge of the wing.



3) Assemble the wing ribs and install the wing girder.



4) Make lower wing cover with 2mm balsa sheet.



5) Install B14.



6) Strengthen wing girder joints with balsa sheets.



7) Make upper wing cover with 2mm balsa sheet.



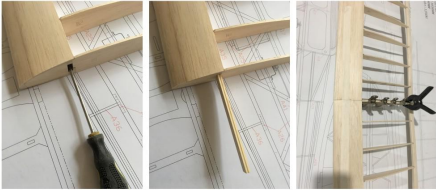
8) Glue 8mm balsa plate to the leading edge of the wing.



9) Sand the leading edge of the wing to be the shape.



10) Use a tool to cut off the middle of the wing ribs and insert stiffeners to combine the wings.



11) Paste the covers on both sides of B8 wing rib.



12) Paste the middle cover.



3 The tail Assembly

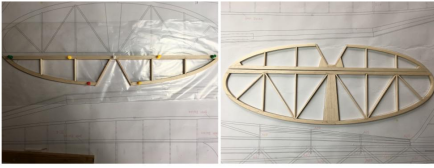
1) Butt and paste the front end of the horizontal tail.



2) Paste other parts according to the plans.



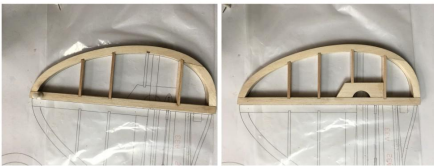
3) Paste the elevator and sand the leading edge.



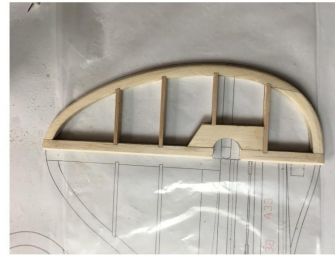
4) Vertical tail assembly.



5) Rudder assembly, and sand the leading edge.



6) Remove the excess balsa parts.



Finished.

4 Others



Windows



Assembly